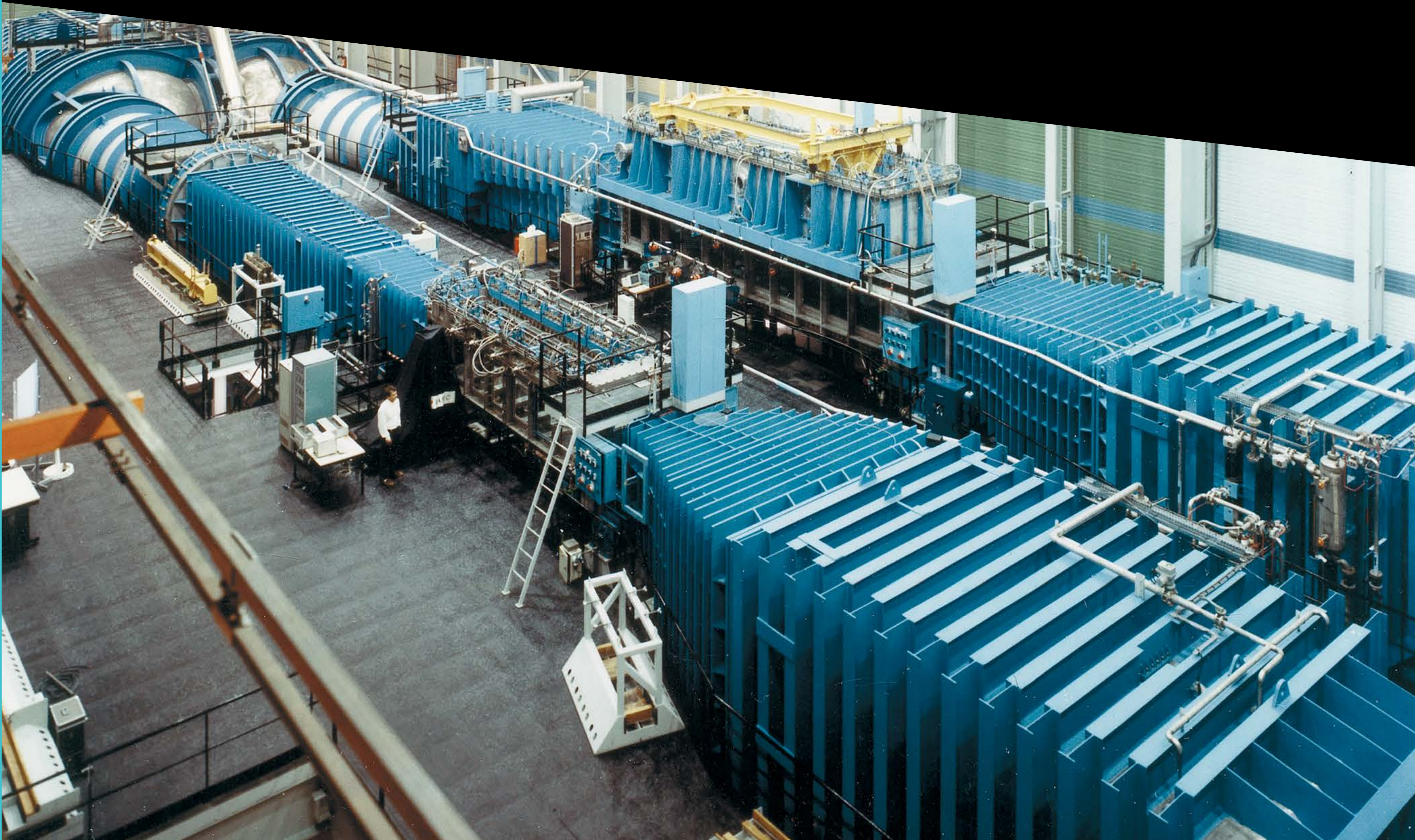


# Test & Evaluation

Secure your projects

## NAVAL



## Hydroacoustic and cavitation tunnel GTH

GTH is one of the test facilities among the worldwide cavitation tunnels which offers to DGA the better characteristics and the higher level of performances for naval propulsion systems and acoustic signatures evaluation

### Main benefits:

- A large cavitation tunnel designed to obtain a background noise as low as possible
- Two test sections able to receive large sizing models fitted with a propulsion system
- Control of the gas content ratio by means of a nuclei injection system to improve the simulated conditions on propeller blades for cavitation erosion and noise radiation

### Main characteristics:

- Large test section (10 x 2 x 1.35 m) with a flow speed up to 12 m/s (about 60 knots)
- Small test section (6 x 1.14 x 1.14 m) with a flow speed up to 20 m/s (about 100 knots)

